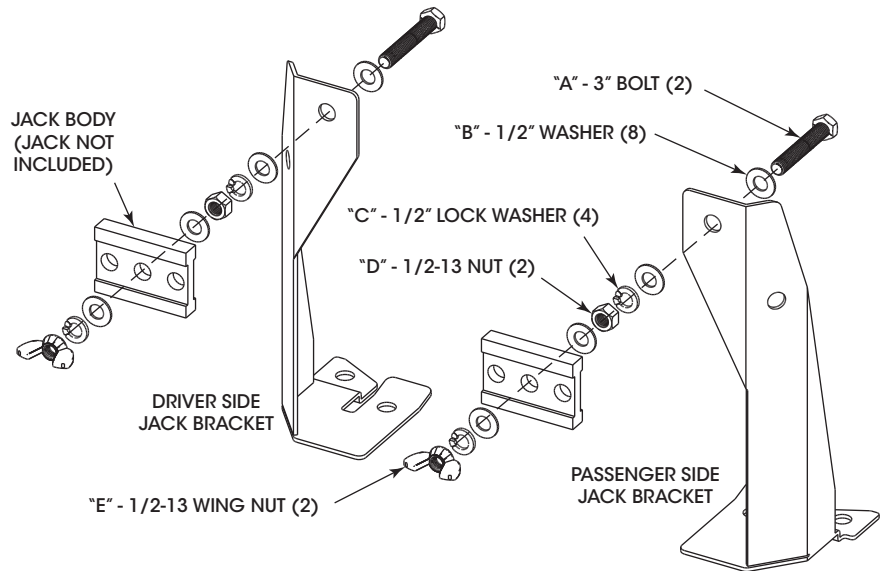




Made in USA • www.crookedriveroffroad.com

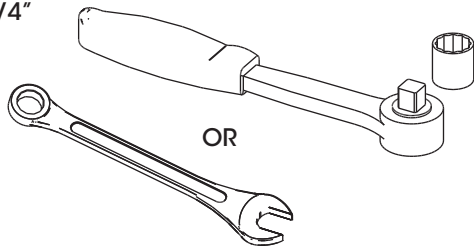
JK Unlimited Jack Bracket Kit

CRO-KT-0001



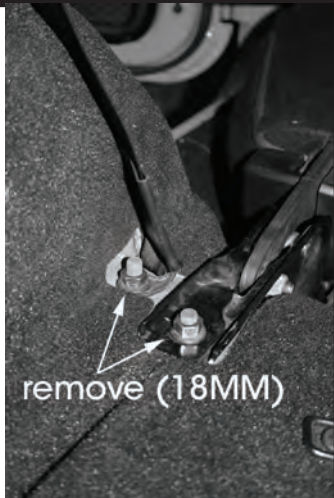
Tools required:

- 18MM
- 3/4"



Step 1

- Remove factory cargo mat (if equipped)
- Remove factory nuts (18MM) from rear seat track and seat belt mount, and set them aside.
- Repeat for other side



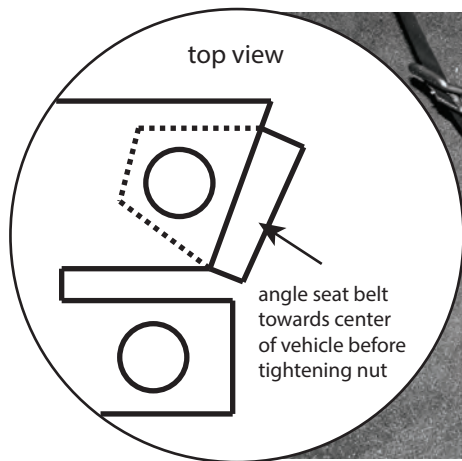
Step 2

- Install jack bracket by placing it over the two factory bolts as shown.
- Make sure the seat belt mount is BELOW the bracket as shown.
- Repeat for other side using the other bracket.



Step 3

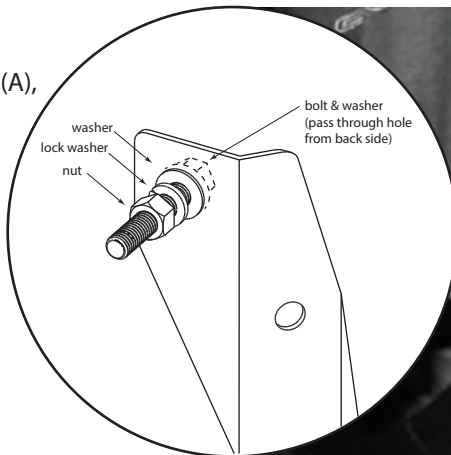
- Position the seat belt mount as shown, so that the seat belt is parallel with the edge of the bracket
- Replace factory nuts and tighten to factory specs (18MM) (see torque note below photo)
- Repeat for other side.



**Factory Torque Spec: 62.5 ft/lbs rear seat mounting nut
30 ft/lbs seat belt bracket nut**

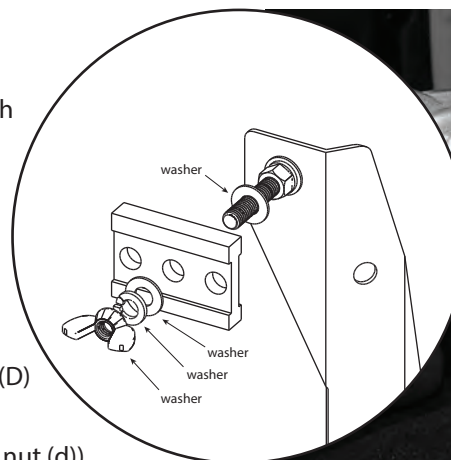
Step 4

- Place washer (B) on bolt (A), pass bolt through bracket
- Place washer (B), lock washer (C) and nut (D) on bolt (A)
- Tighten bolt (A) and nut (D) using a 3/4" socket / wrench.
- Repeat for other bracket



Step 5

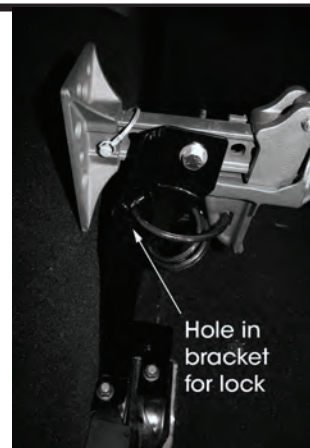
- Place washers (B) on each bolt (A)
- Center the jack in the back of the vehicle and route each bolt through the corresponding holes in the jack body
- Place washers (B), lock washer (C), and wing nut (D) on each bolt (A)
- Hand tighten each wing nut (d))



washer,
lock washer &
wing nut

Step 6

- Optional: pass a cable lock through the hole in the jack bracket and your jack to secure the jack to the bracket.
- Note: lock sold separately



Note:

- Routinely check to make sure wing nuts, and other hardware components are securely fastened; tighten if necessary
- Routinely check seat belt for any signs of wear caused by bracket; replace seatbelt or discontinue use of bracket kit if necessary
- Jack brackets may rub seat back depending on load and seat angle. If this occurs, remove jack foot to provide more clearance.
- Jack foot can be stored in compartment under rear cargo area.

Warning: Operating a motor vehicle on or offroad is inherently dangerous and may result in injury or death. Improperly secured cargo may cause injury or death during the course of normal operation or in the event of an accident. Make sure cargo is properly secured before operating any motor vehicle. Never use the mount for anything other than the jack or serious injury may occur.

Warning: Offroad operation of a vehicle is hazardous. For your safety: Always wear your seat belt, a helmet, eye protection, and protective clothing. Never ride under the influence of drugs or alcohol. Avoid excessive speeds and stunt driving. Be extra careful on difficult terrain.

Warranty: Please see our website for full product warranty details www.crookedriveroffroad.com